

## TECHNICAL DATA SHEET

**Check ball valve ELEPHANT VCB1414N-F  
DN40-300 16 bar cast iron, flanged,  
without drain plug**



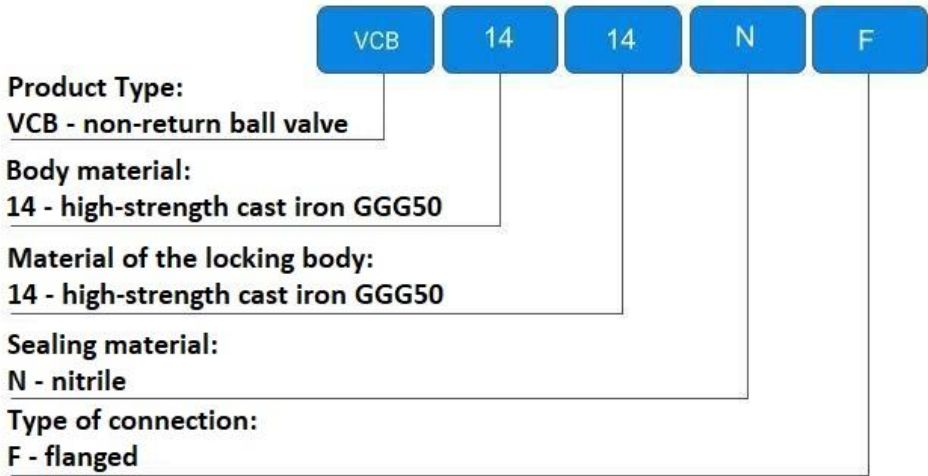
## 1. GENERAL PRODUCT INFORMATION

1.1. Product name: Check ball valve ELEPHANT VCB1414N-F DN40-300 16 bar cast iron, flanged, without drain plug.

1.2 Purpose: Ball check valves are used to protect the pipeline system from possible flows of working medium in the reverse direction. The ball covered with a protective layer of NBR rubber acts as a return flow limiter. They are designed for sewerage systems, including storm water systems, pipelines transporting sewage, technical hot and cold water and other liquids.



1.3. Deciphering of the designation:

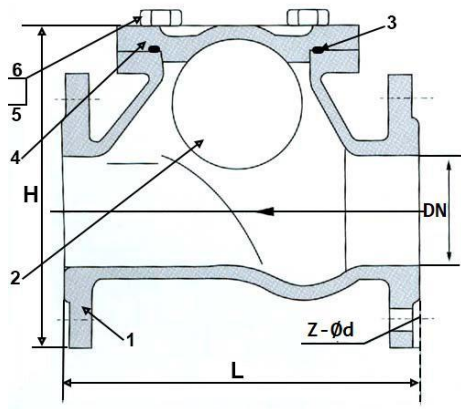


BASIC TECHNICAL DATA AND CHARACTERISTICS

Nominal diameter DN, mm	40 – 300
Nominal pressure PN, bar	16
Ambient temperature t, °C	From -10 to +80
Working medium	Hot and cold water
Connection to pipeline	flanged
Flow direction	one-way
Valve type	return



MATERIAL INFORMATION FOR MAJOR PARTS



Nº	Name	Material	Nº	Name	Material
1	Body	Cast iron GGG50	4	Cover	Cast iron GGG50
2	Ball	Cast iron GGG50 + NBR	5	Bolt	Steel SS304
3	Seal	NBR	6	washer	Steel SS304

BASIC VALVE DIMENSIONS

DN	L	H	Z- Ød	Weight
mm				kg
40	219	150	4 – Ø19	7.5
50	219	165	4 – Ø19	7.5
65	222	185	8 – Ø19	9
80	257	200	8 – Ø19	11.5
100	280	220	8 – Ø19	15.5
125	320	250	8 – Ø19	28
150	355	285	8 – Ø23	32
200	435	340	12 – Ø23	53
250	498	405	12 – Ø28	83
300	555	455	12 – Ø28	133



## INSTALLATION AND OPERATION

1. It is not allowed to use check valves for operating parameters different from those specified in the technical documentation.
2. Before operation the pipeline should be blown out to remove scale and dirt.
3. The alignment of the pipeline and the distance between the flanges should be within 3-5 mm of ideal, so that during installation, the valves are not subjected to excessive mechanical stress.
4. The valve shall be installed on the pipeline so that the arrow on its body coincides with the direction of flow of the medium, and no closer than 3-5 diameters before or after the pipe constriction/turn.
5. The valve can be installed on vertical, inclined and horizontal pipeline sections.
6. Before installation, the sealing surfaces of the check valve and connecting flanges must be thoroughly cleaned.
7. Tightening of the fixing bolts should be carried out evenly.



WARRANTY PERIOD

Warranty period - 12 months from the date of commissioning, but not more than 18 months from the date of sale.

The warranty does not apply:

- parts and materials of the product subject to wear and tear
- for cases of damage caused by:
  - violations of the product storage, installation, testing, operation and maintenance specifications;
  - improper transportation and handling operations;
  - the presence of traces of exposure to substances aggressive to the product materials;
  - presence of damage caused by fire, elements, force majeure circumstances;
  - damage caused by incorrect actions of the consumer;
  - traces of tampering with the design of the product.

SALES MARK

No	Product Name	Packs

Date of sale: \_\_\_\_\_

L.S.

