



Manufacturer of shut-off and control valves

TECHNICAL DATA SHEET

**Solenoid valve ELEPHANT VS7x-PT-NC-x
DN15-50 10 bar with zero differential pressure,
brass/stainless steel, screwed**



+34 900 433 073, sales@valveelephant.com
Carrer d'Aragó, 264, 3-1, 08007 Barcelona, Spain

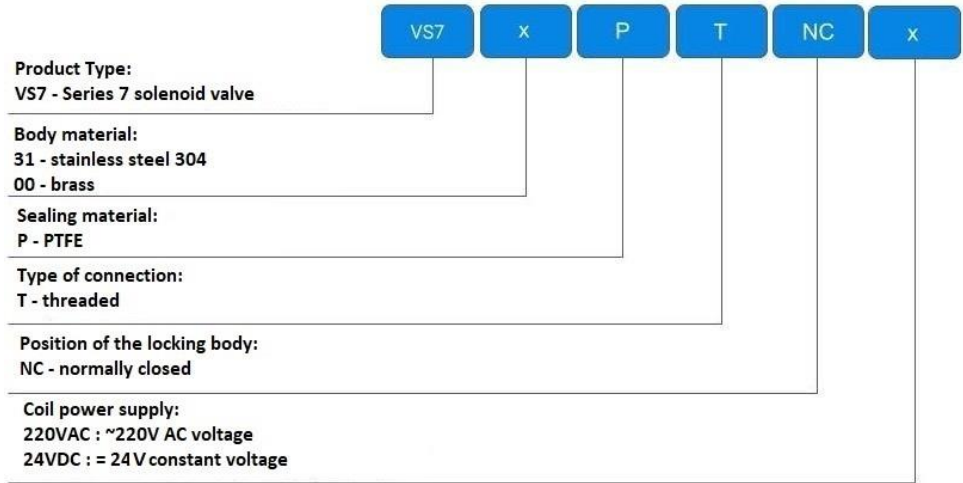
GENERAL PRODUCT INFORMATION

Product name: Solenoid valve ELEPHANT VS7x-PT-NC-x DN15-50 10 bar with zero differential pressure, brass/stainless steel, threaded.

Purpose: In a normally closed solenoid valve, the closed position is maintained when no control voltage is applied to the induction coil. When voltage is applied to the coil, the normally closed valve opens and allows the medium to flow through. When the control voltage is switched off, the valve closes automatically and blocks the medium flow in the pipeline.



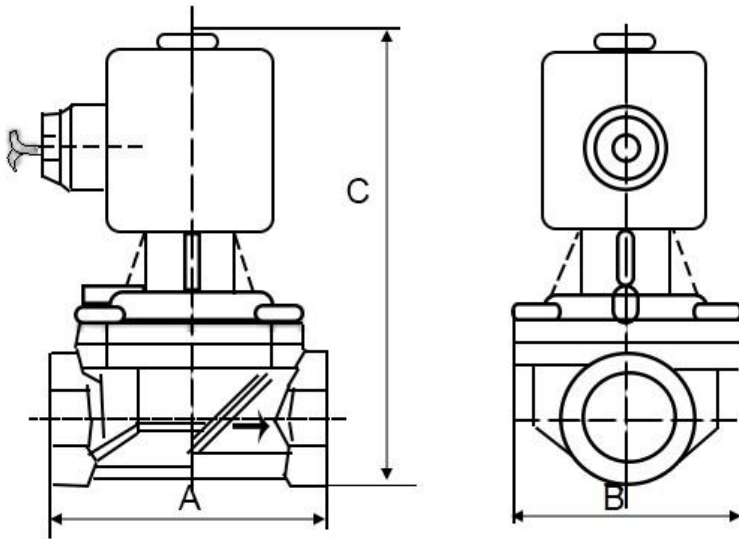
Deciphering of the designation:



BASIC TECHNICAL DATA AND CHARACTERISTICS

| | |
|----------------------------------|--|
| Nominal diameter DN, mm (inch) | 15 – 50 (1/2”-2”) |
| Working pressure PN, bar | 0...10 |
| Working medium temperature t, °C | 0 to +180 |
| Working medium | steam, hot water, high-temperature liquid |
| Operating principle | with zero differential pressure |
| Device type | normally closed |
| Pipeline connection | threaded |
| Thread type | G |
| Coil supply | AC220V или DC24V |
| Housing material | brass (700 series) or steel 304 (701 series) |
| Sealing | PTFE |
| Protection class | IP65 |
| Coil insulation class | F |
| Coil design | Ø cross-sections from 2.5 to 4 mm: with DIN connectors (fully encapsulated) Ø cross-sections from 15 to 50 mm: with lead wires (fully encapsulated) |





| DN | Ø bore | Ø sections | A | B | C | Weight (kg) | |
|----|--------|------------|-----|----|-----|-------------|-----|
| | inch | | | | | mm | |
| 15 | 1/2" | 15 | 62 | 53 | 115 | 0.8 | 0.8 |
| 20 | 3/4" | 20 | 80 | 57 | 123 | 1.0 | 1.0 |
| 25 | 1" | 25 | 91 | 70 | 134 | 1.5 | 1.4 |
| 32 | 1 1/4" | 32 | 95 | 74 | 162 | 2.1 | 1.9 |
| 40 | 1 1/2" | 40 | 120 | 90 | 171 | 2.7 | 2.6 |
| 50 | 2" | 50 | 152 | 97 | 183 | 4.5 | 4.1 |



BASIC OPERATING PARAMETERS

| Model | DN | G | Ø sections | Throughput | Working pressure (bar) | | | | | Coil power | |
|--------------------------|----|--------|------------|------------|------------------------|------------------|-------|----|------------------------|------------|----|
| | | | | | Minimum pressure | Maximum pressure | | | | VA | W |
| | mm | inch | mm | m3/hour | | 6ap | Steam | | High-temperature fluid | | |
| VS2W-700(701) P-Z-NC -15 | 15 | 1/2" | 15 | 4.8 | 0 | 10 | 6 | 10 | 6 | 23 | 28 |
| VS2W-700(701) P-Z-NC -20 | 20 | 3/4" | 20 | 7.6 | 0 | 10 | 6 | 10 | 6 | 23 | 28 |
| VS2W-700(701) P-Z-NC -25 | 25 | 1" | 25 | 11 | 0 | 10 | 6 | 10 | 6 | 48 | 42 |
| VS2W-700(701) P-Z-NC -32 | 32 | 1 1/4" | 32 | 24 | 0 | 10 | 5 | 10 | 5 | 48 | 42 |
| VS2W-700(701) P-Z-NC -40 | 40 | 1 1/2" | 40 | 29 | 0 | 10 | 5 | 10 | 5 | 48 | 42 |
| VS2W-700(701) P-Z-NC -50 | 50 | 2" | 50 | 45 | 0 | 10 | 5 | 10 | 5 | 48 | 42 |



WARRANTY PERIOD

Warranty period - 12 months from the date of commissioning, but not more than 18 months from the date of sale.

The warranty does not apply:

- parts and materials of the product subject to wear and tear
- for cases of damage caused by:
 - violations of the product storage, installation, testing, operation and maintenance specifications;
 - improper transportation and handling operations;
 - the presence of traces of exposure to substances aggressive to the product materials;
 - presence of damage caused by fire, elements, force majeure circumstances;
 - damage caused by incorrect actions of the consumer;
 - traces of tampering with the design of the product.

SALES MARK

| No | Product Name | Packs |
|----|--------------|-------|
| | | |
| | | |
| | | |

Date of Sale: _____

L.S.

